

PORTFOLIO

**MINDMADE**

+

THE JOURNEYS  
TO MINDMADE

JANE CAMELLIA SARKAR

# ABOUT

I am a British born artist. I trained at Manchester School of Art, specialising in painting, with an interest in modern figurative. From the 1980s I collaborated with various artists, and was a founder of MASA ( Manchester Artists Studio Association). I then followed an extensive career in the luxury fashion industry.

In my work I tend to focus on contemporary issues as the drivers of change which will impact our lives to explore and inspire cutting edge ideas.

It is important for me to be exposed to different mediums and take the maximum opportunity to experiment. To be open to new technologies and potential collaboration challenges the status quo, reforms my own perceptions and creates the very best opportunities to discover new ideas and fresh approaches how we envisage, innovate and experience our world.

# **MINDMADE**

2016

## **THE JOURNEYS TO MINDMADE**

URBAN NATURES

LIGHT TRAVEL THROUGH THE ROSA OBSCURA

2015 - 2016

THE PATH TO MINDMADE FLOWERS

WRITING + FLORAL PHOTOGRAPHY BLOG

2014 - 2015

# MINDMADE

MINDMADE is a science and art creative journey. The initial research uses the intimacy and immediacy of photography to investigate beneath the physicality of Nature, to discover/feel how plant technology prepares survival strategies for climate adaptation.

In the second part of the creative process, digital painting is the exploratory and intuitive tool to find and express new messages and concepts, a language between human and plants - an invisible, unspoken, “mind language”.

No manipulation of colour was used, but the digital brush when painting will mix pixels to create new hues.



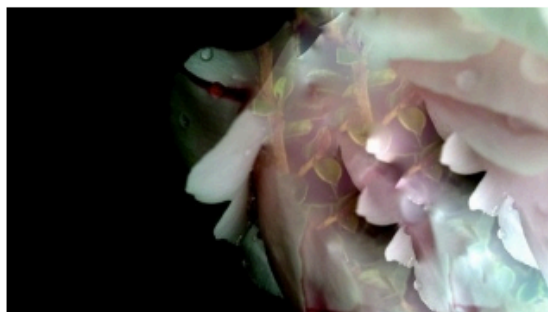
# JANE CAMELLIA SARKAR

*London*

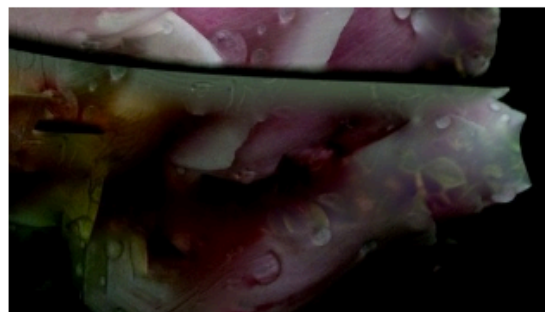
[FOLLOW](#)

PROFILE

ARTWORKS [3]



*EVOLUTION'S GENETICALLY  
ENGINEERED LASER CUTTING*



*PEONY 'S LABORATORY Seditio*

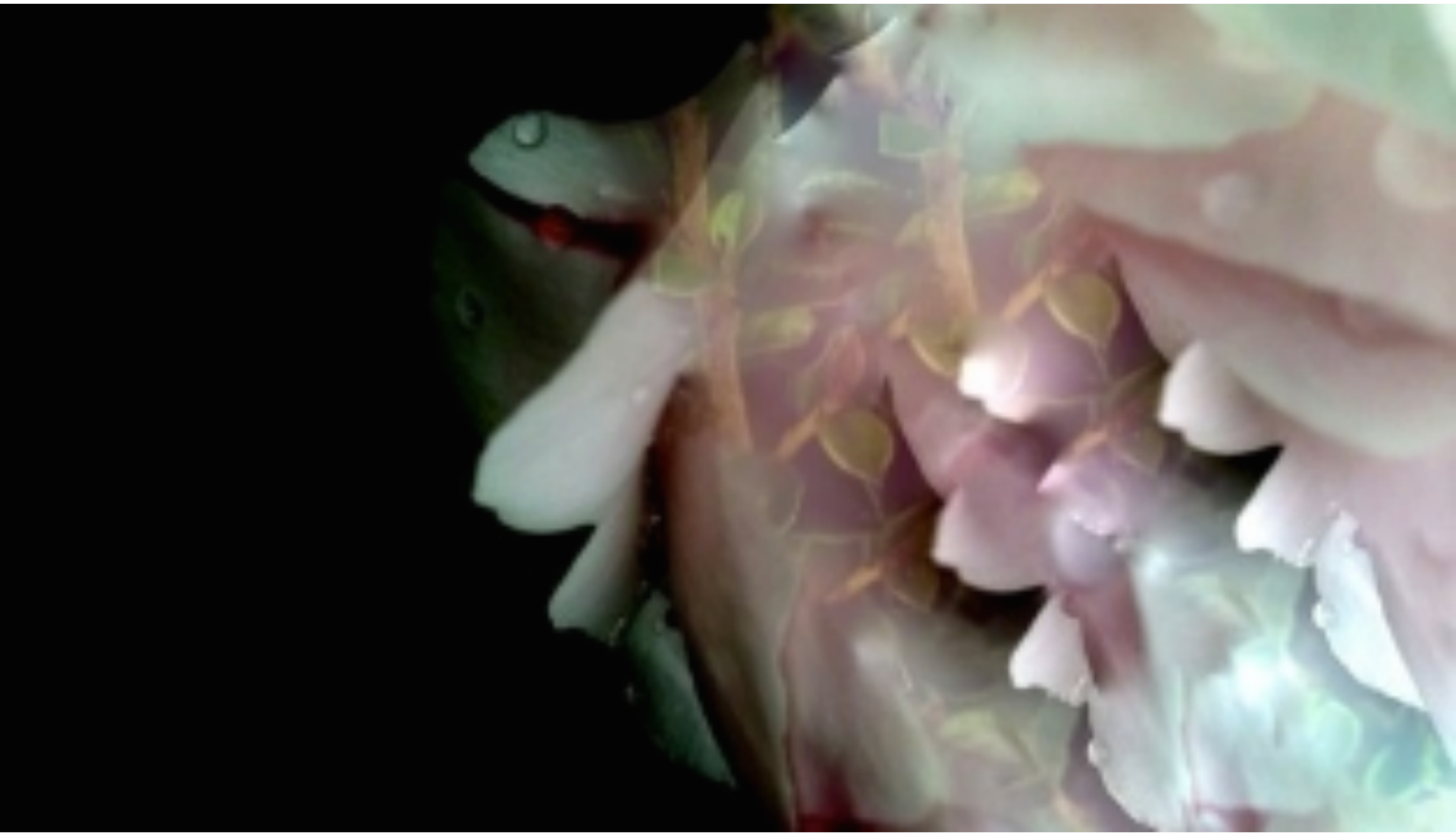


*RAINPROOFED LIGHTING OF  
THE PETALLICA Seditio*

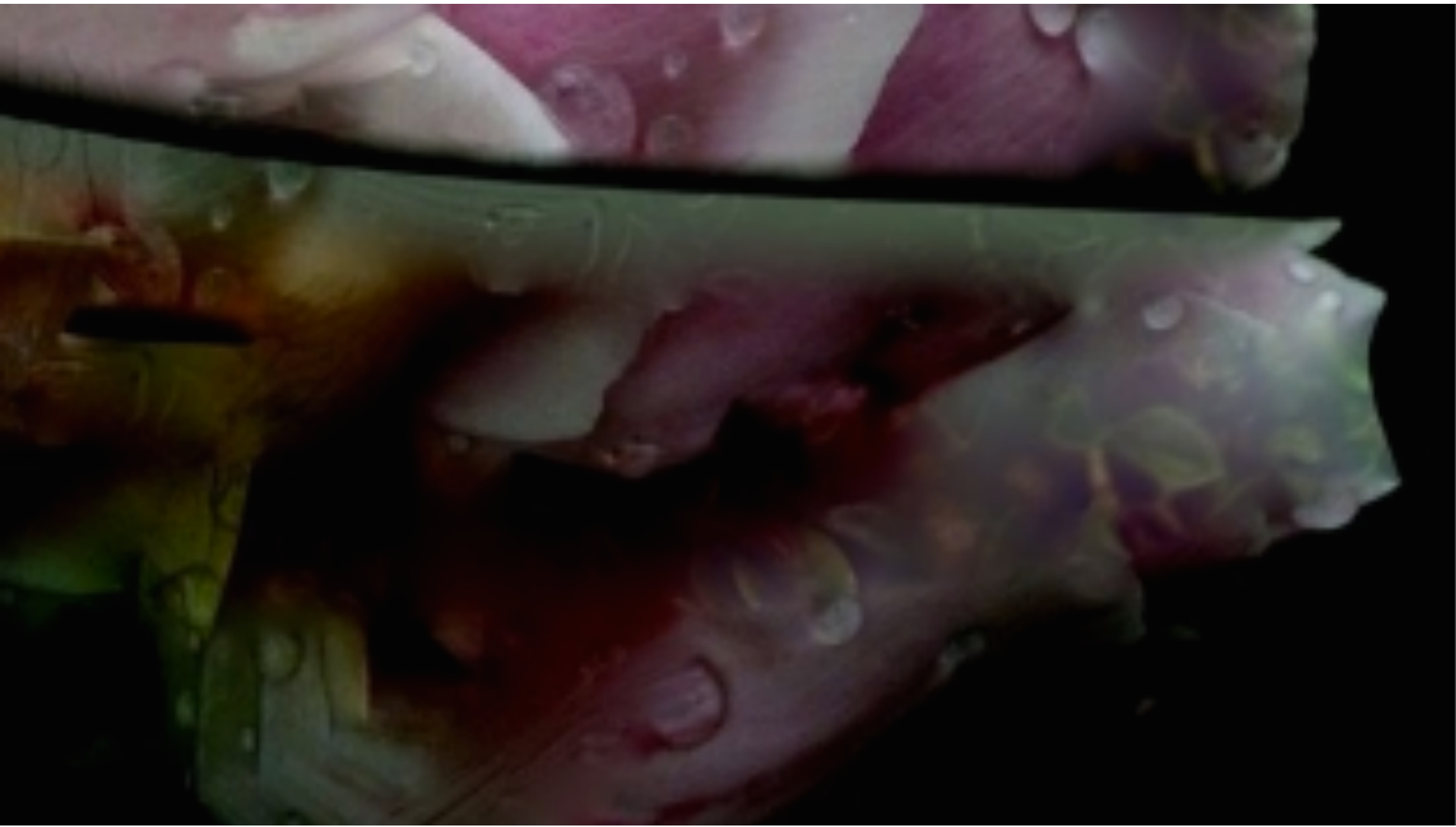
# THINKING

As modern symbols of our age in environmental awareness, within their capacity as a universal language, flowers would appear to have the ability to both adapt and predict the future.

Is something to be learned through their innate evolution in readily adapting to the seasons?



EVOLUTION'S GENTICALLY ENGINEERED LASER CUTTING *Sedition*



PEONY'S LABORATORY *Sedition*



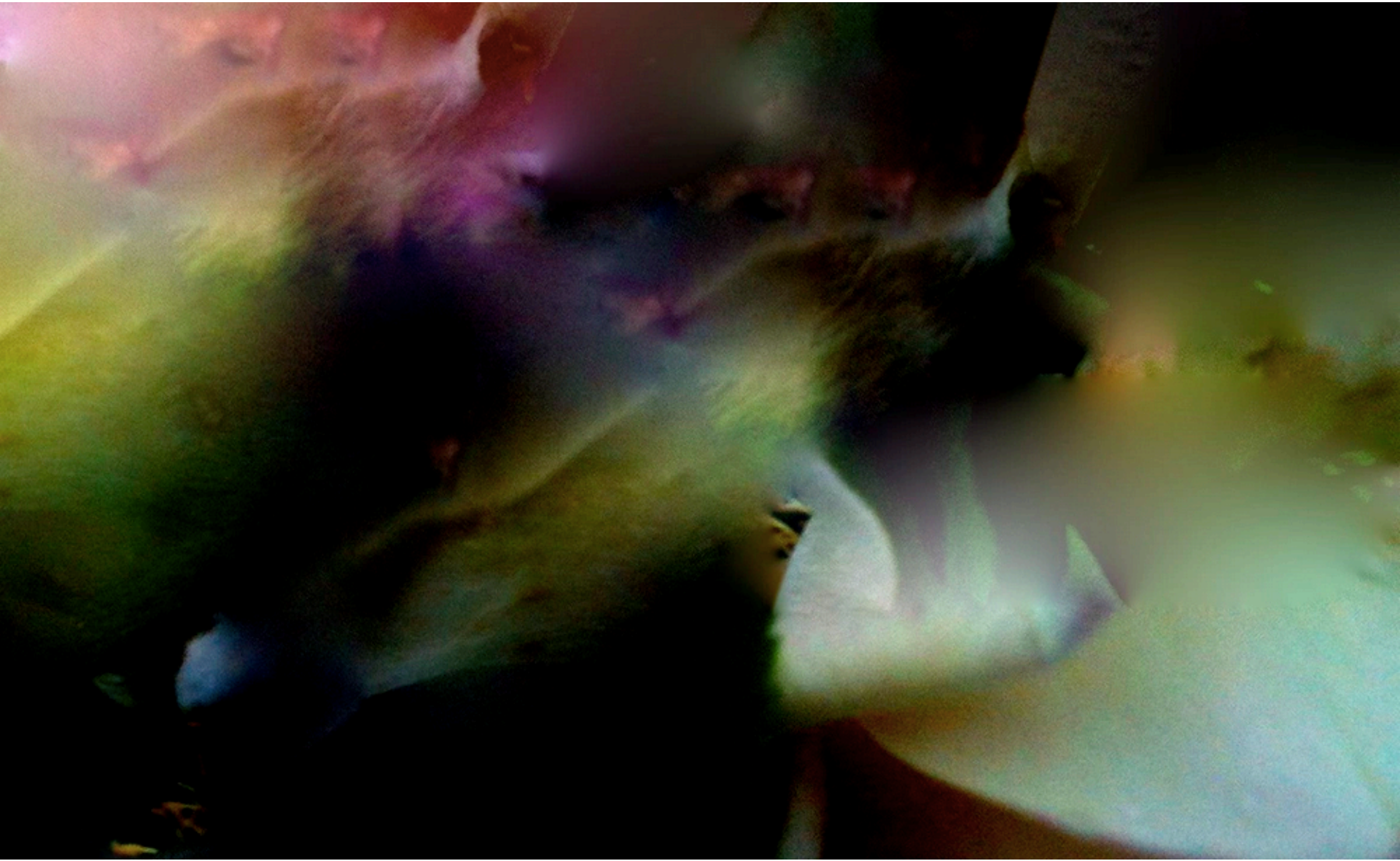


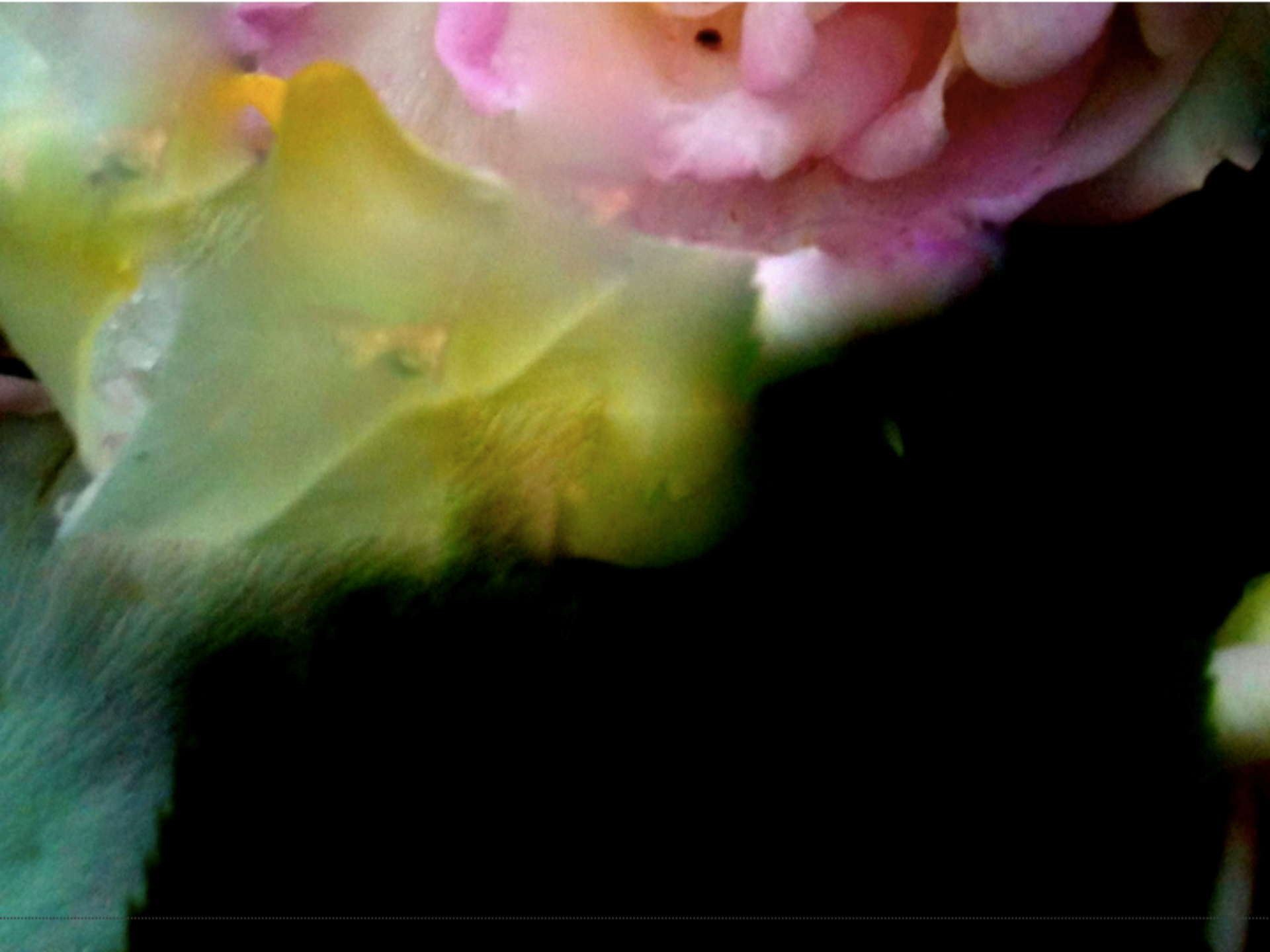
RAINPROOFED LIGHTING OF THE PETALLICA *Sedition*

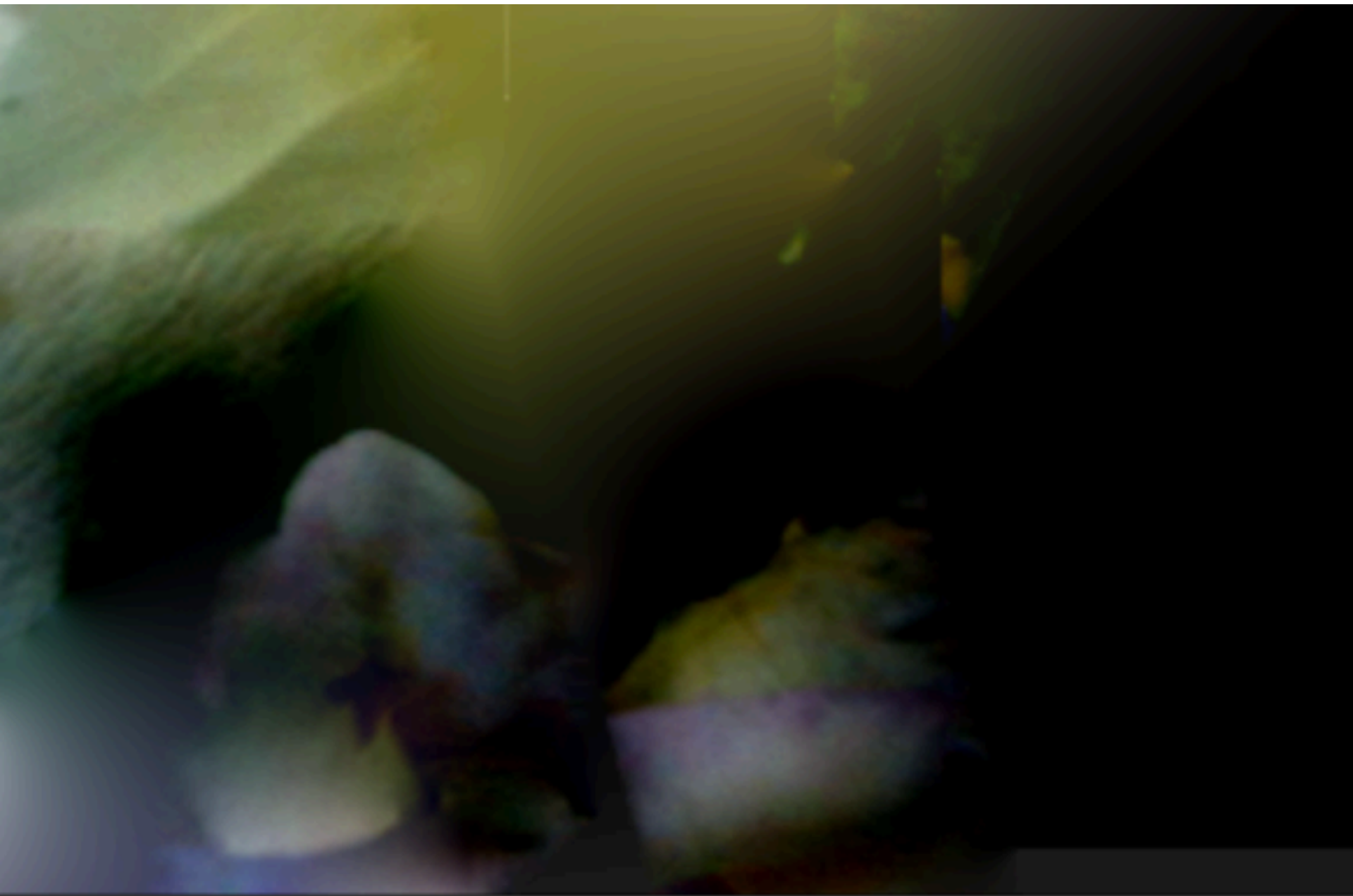
# THE JOURNEYS TO MINDMADE

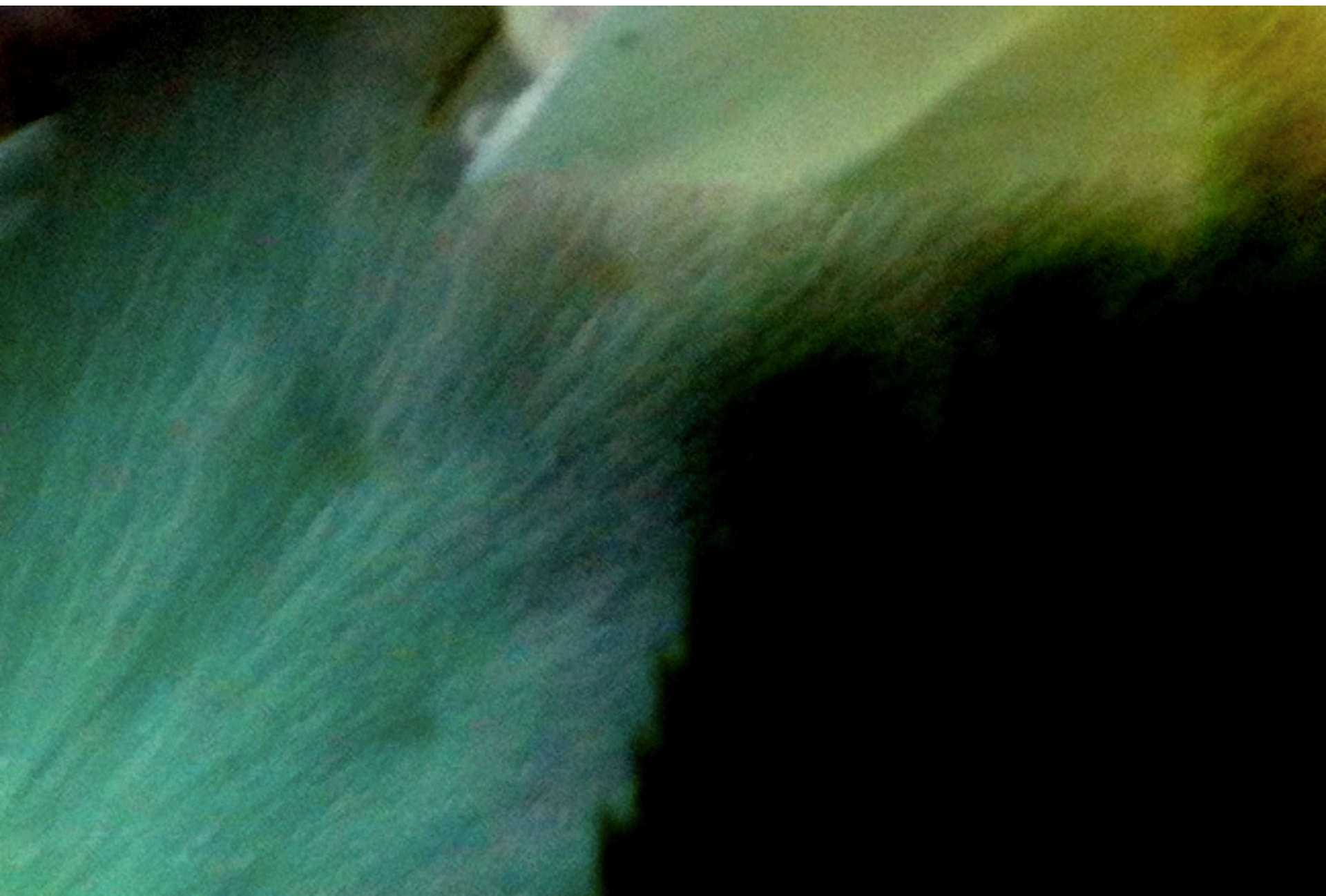
<https://www.seditionart.com/jane-camellia-sarkar>

LIGHT TRAVEL THROUGH THE ROSA OBSCURA









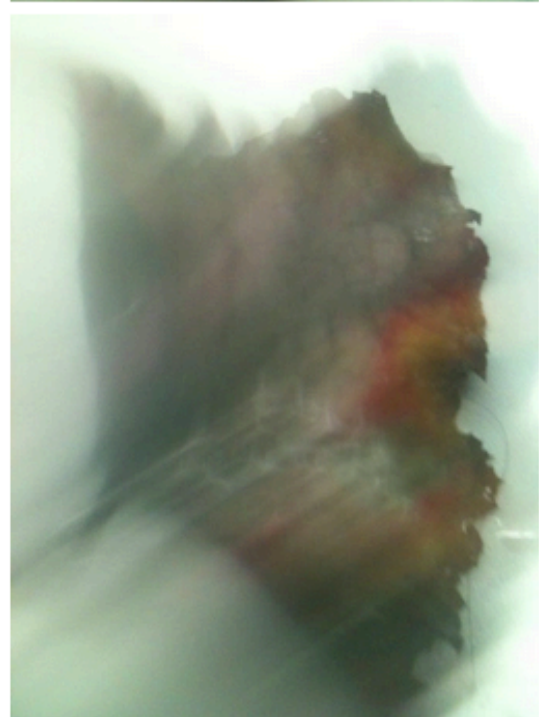
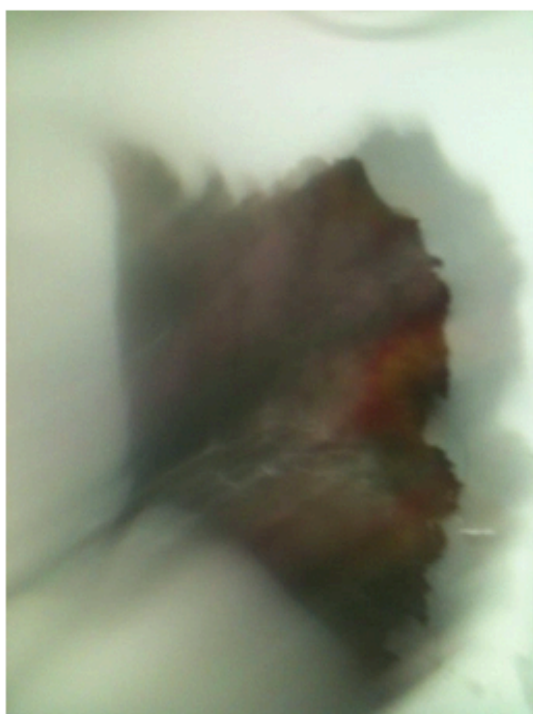
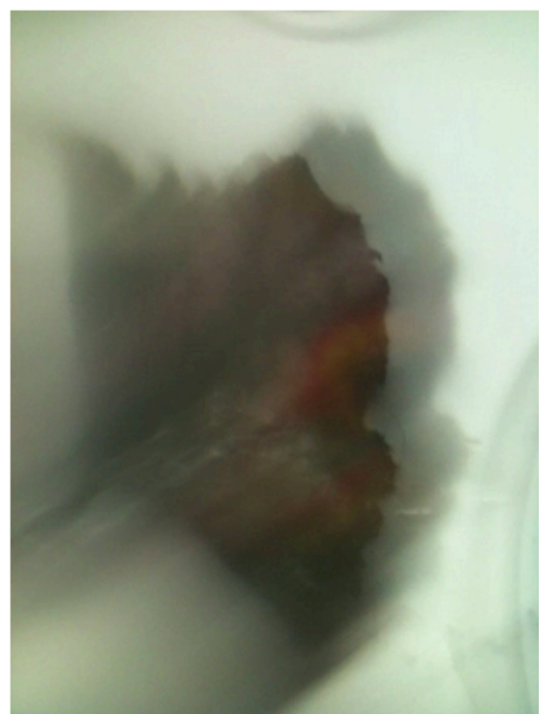


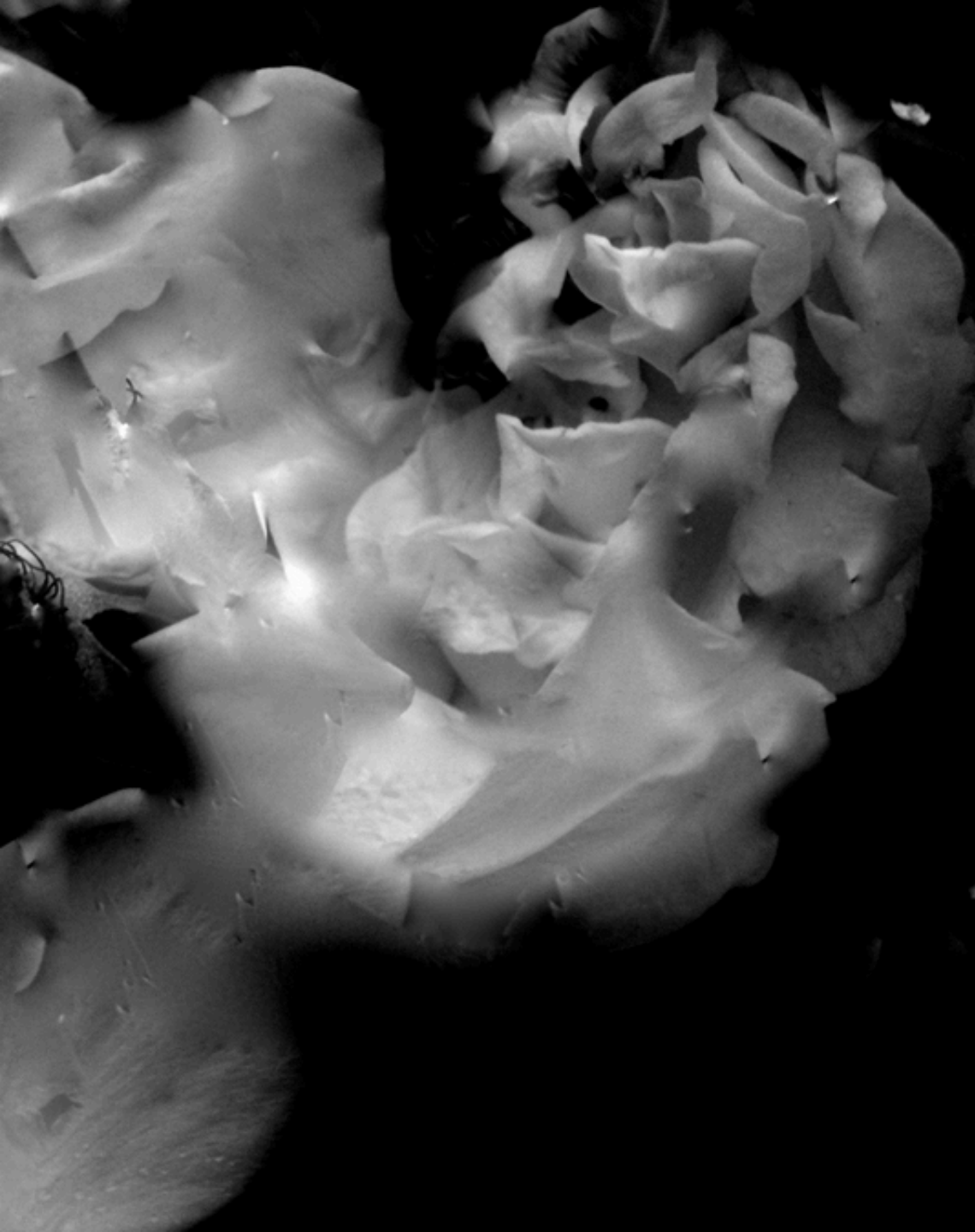
PHOTOGRAPHY  
STUDIES

URBAN NATURES









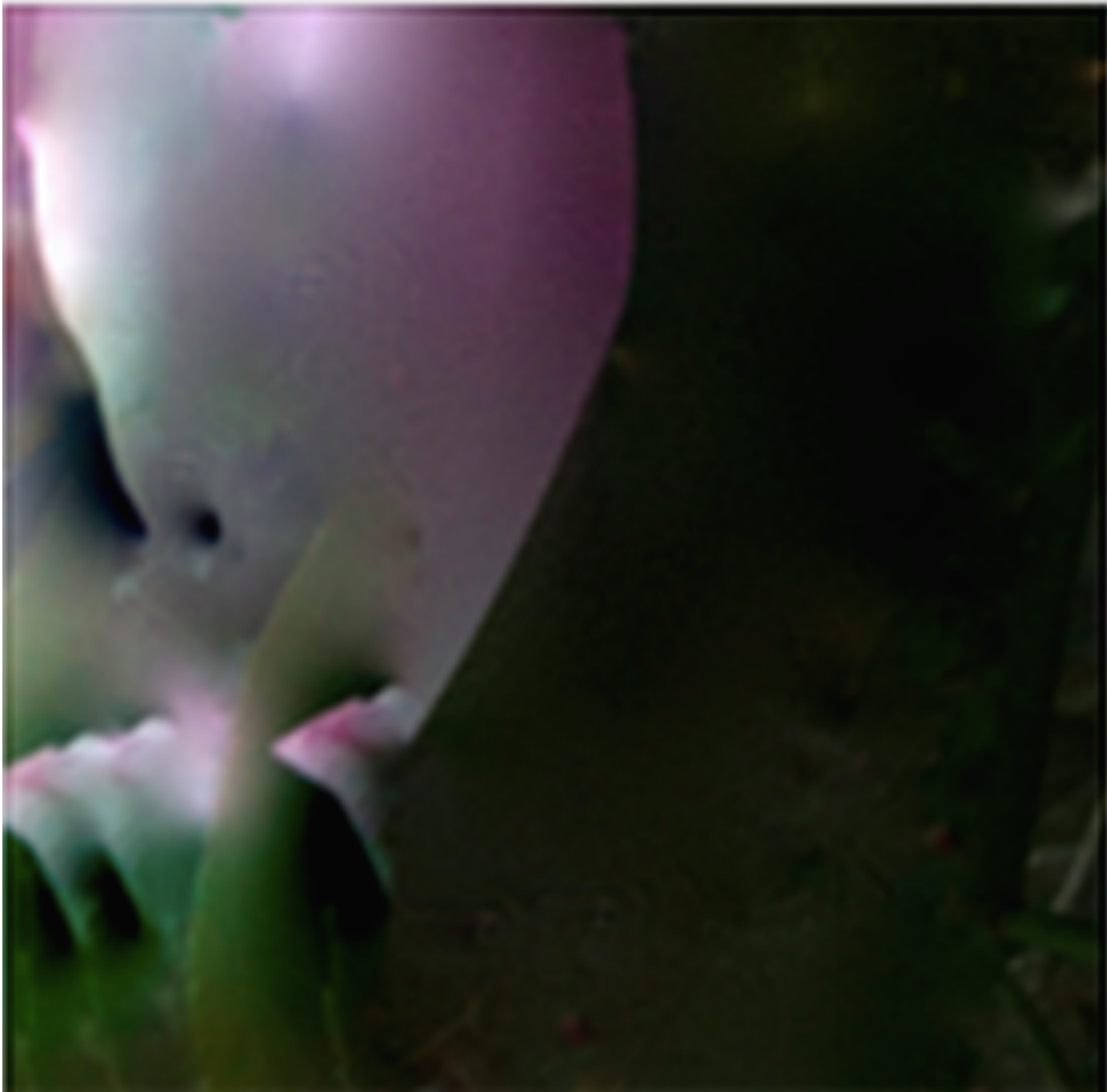
STUDIES + DIGITAL PAINTINGS

THE PATH TO MINDMADE FLOWERS



# STUDY

21.09







SELF CLONING  
FOR A PURE  
SALVATION  
June 2014



PATH  
June 2014



REFLECTION  
June 2014



AWAKENING  
June 2014

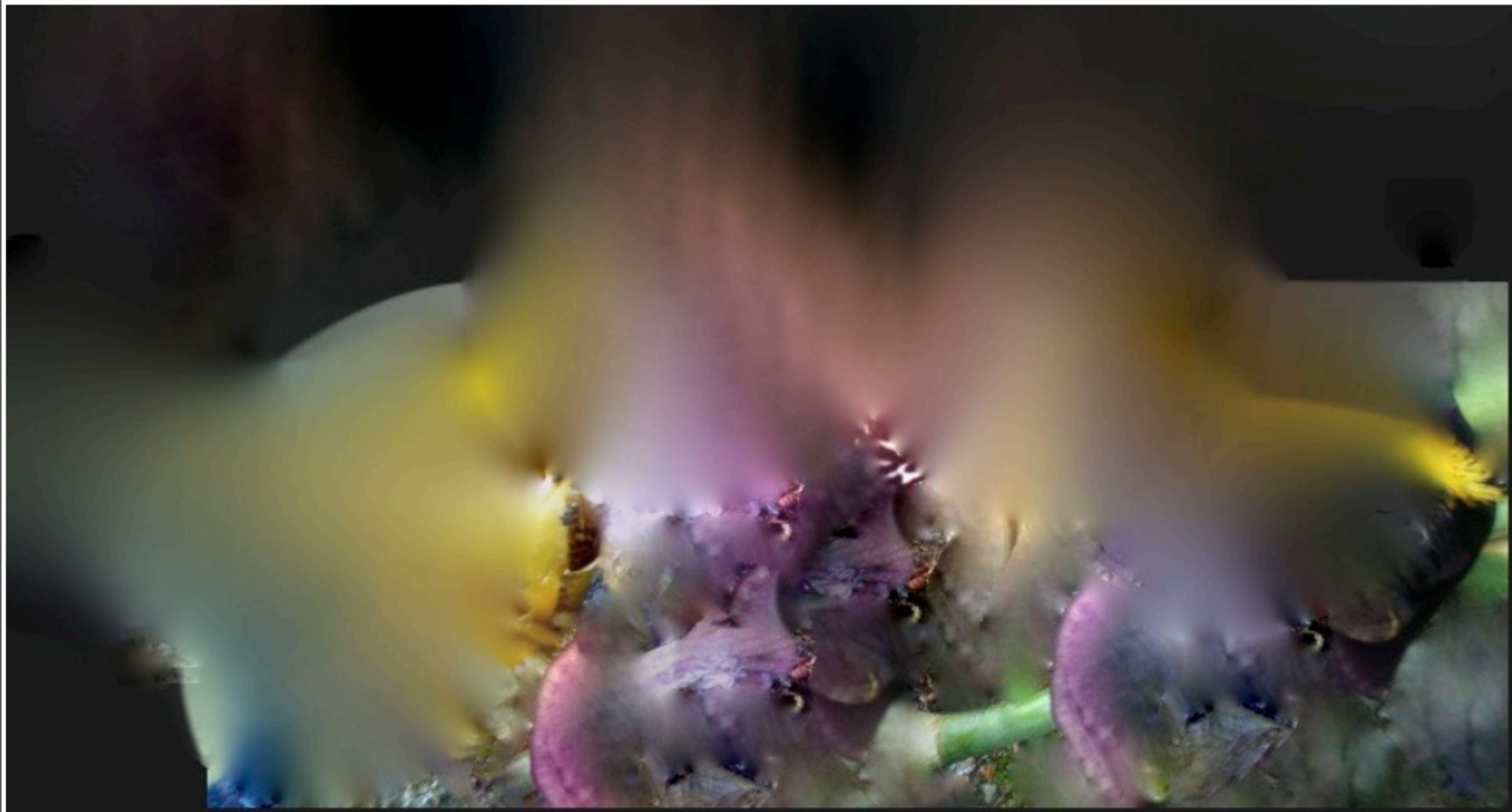


*Poppy Series*  
A NEW VISION

1 & 2

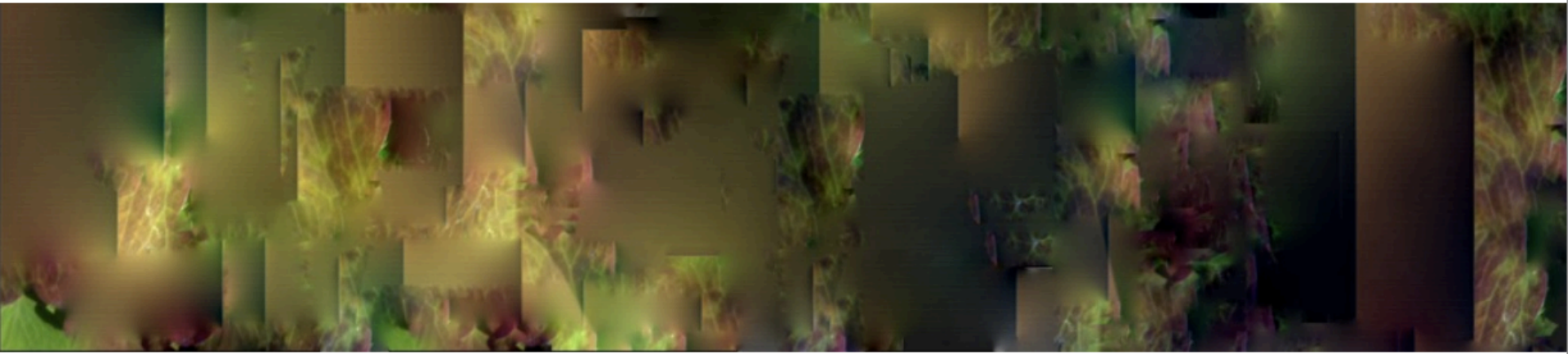
June 11-12 2014





## IRIS' METAMORPHOSIS

June 2014



LIGHT + DRY + DARK + WET  
WILL MAKE LIFE FALL  
BEYOND US

BEYOND US

BECAUSE  
EDEN CALLS  
AND  
EDEN BUILDS  
INSPIRE OF US



# WRITING AND FLORAL PHOTOGRAPHY

## **BLOG**

<https://lafloralie.wordpress.com>  
<https://lafloralie2.wordpress.com>